

SESSION 9

Building Resilience through Sustainable Livelihoods

Building Block 4: Programmes and Delivery Systems for Adaptive Social Protection

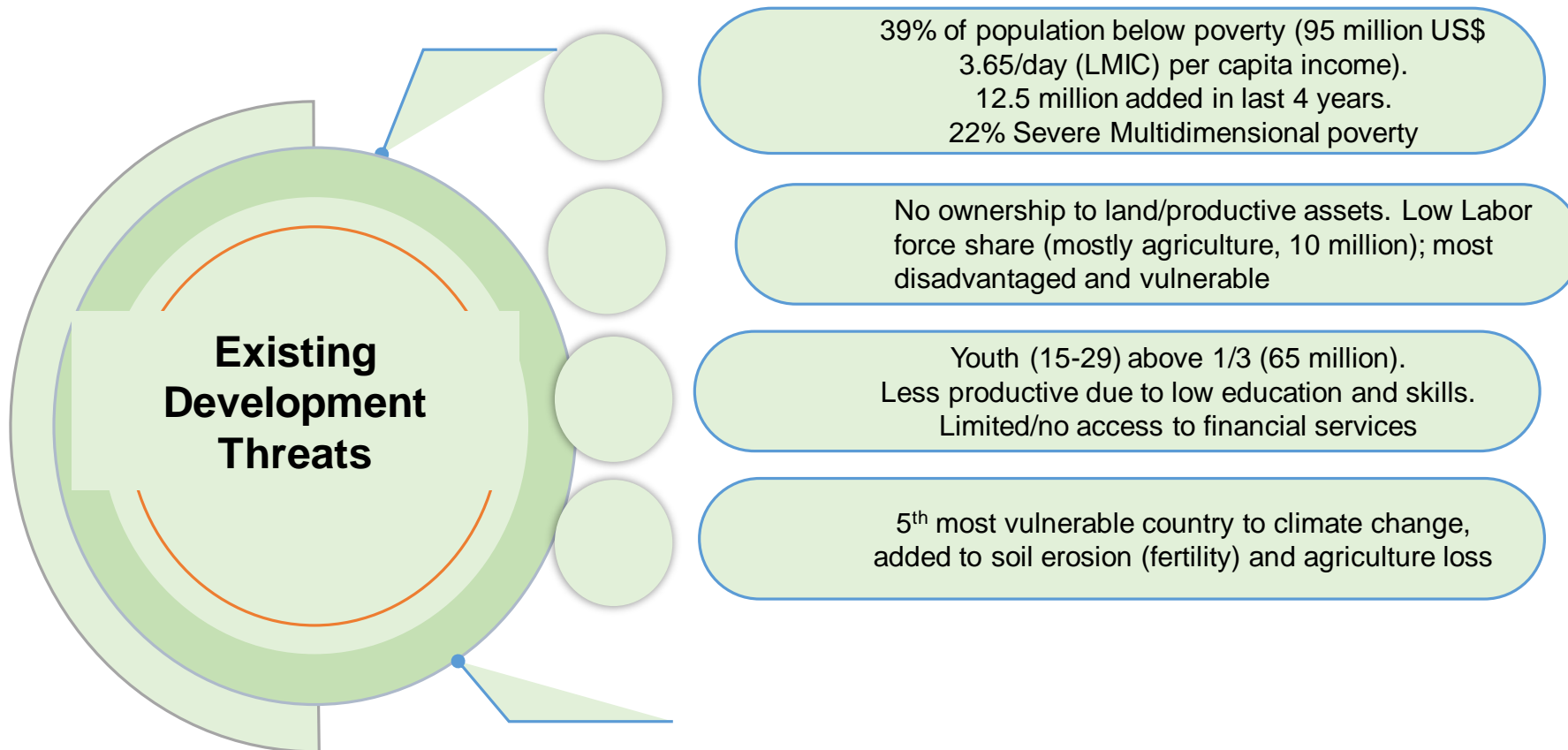
Ghulam Nabi Marri, Country Programme Coordinator
International Fund for Agriculture Development (IFAD)



Livelihood Challenges in Pakistan

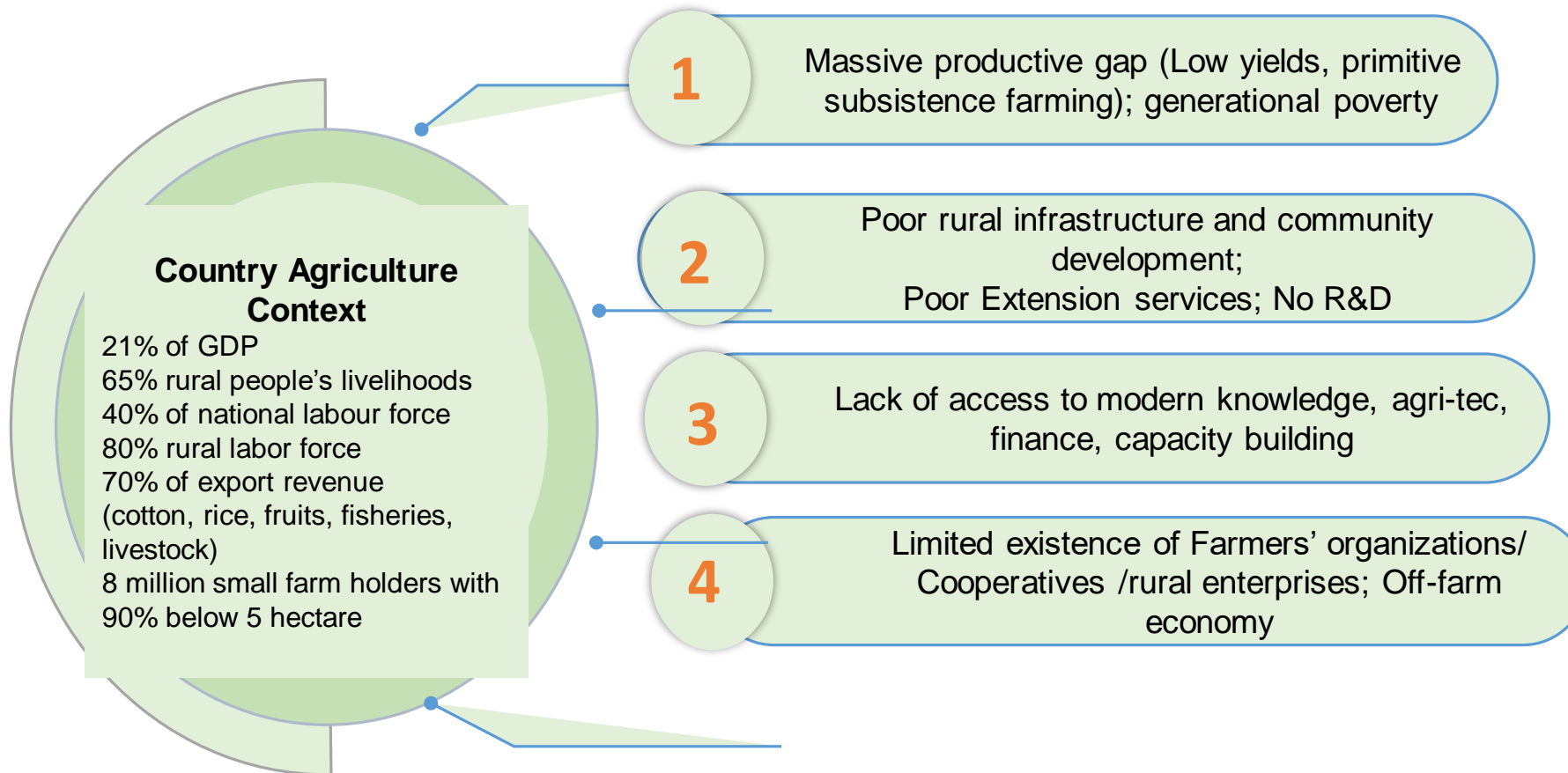


Fifth Populous Country in the World (240 million, 49.6% female)
LMIC with US\$ 1588/capita and GDP US\$ 375 billion



Agriculture Sector & Livelihood Dependency

Base of the Economic Structure of the National Economy and Rural Livelihood



Pakistan IFAD Current Portfolio (Creating Livelihood Opportunities)



OVERALL GOAL

Contribute to inclusive and accelerated **rural poverty reduction** and enhanced **food security** in a gender, youth, nutrition, and climate change-sensitive manner

Strategic Objective 1

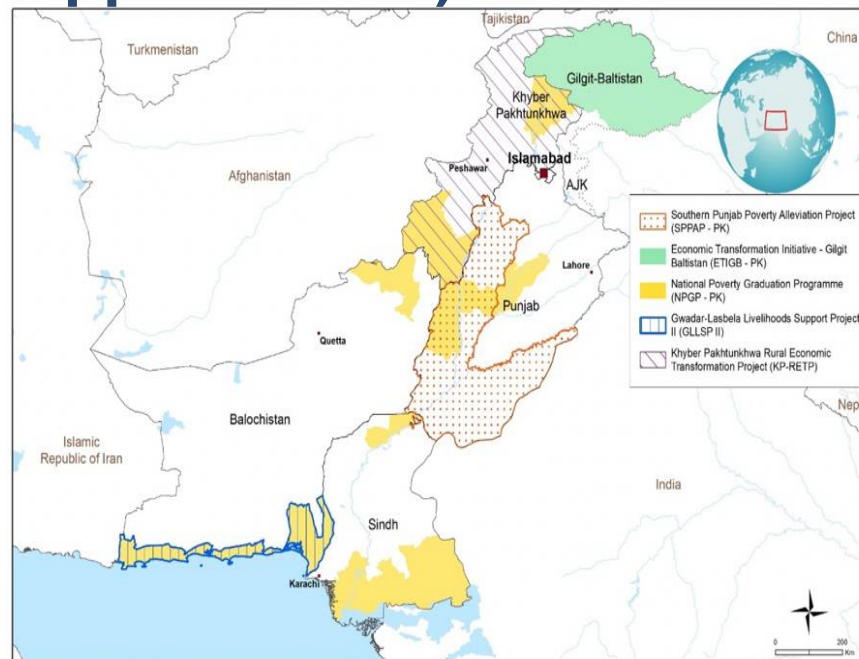
Transitioning the ultra-poor through proven graduation models centred on women and youth

Strategic Objective 2

Promoting value chain-centered smallholder agriculture development in partnership with the private sector

Current Portfolio Overview

IFAD Financing	2 nd largest Portfolio
Current Financing	IFAD US\$ 451 million Dom. US\$ 196 million Int. US\$ 43 million
Total Financing	US\$ 691 million
Country Portfolio	5 projects ongoing 1 project in pipeline



CPIs Interventions

- Irrigation and land development
- Farm to market roads; agriculture land development
- Value chains support services (Cooperatives and 4Ps)

Value Chain Interventions

- Fisheries , Agriculture and livestock Value Chain development
- Value chain support services (Cooperatives and 4Ps)
- Strengthen institutional capacity

Livelihood Opportunities

- Asset provision
- Vocational training
- Access to finance
- Community food banks

IFAD Project Livelihood Opportunities (SPPAP & NPGP)



IFAD Targeting Inclusion

2nd National Social Protection Conference

24th – 26th February 2025 | Karachi









RURAL WOMEN Empowerment through SPPAP

Southern Punjab Poverty Alleviation Project (SPPAP)-IFAD Assisted is a joint initiative of Planning & Development Board, Government of Punjab, Pakistan and International Fund for Agricultural Development (IFAD). SPPAP is designed to directly impact poverty through its programs of social mobilization, social protection, and asset & skill creation for poor households with special focus on women. Basically Pakistan is basically an agricultural country its rural areas and the population continue to be the mainstay of economy. About 67 % of population resides in rural areas. Incidence of poverty in rural areas is comparatively high therefore, SPPAP has focused only on rural poor households.






OBJECTIVE
The project objective is to increase incomes of 382,823 poor households by enhancing the employment potential of the people and increasing agriculture productivity and production through:

- Assets Transfer;
- Vocational / Entrepreneurship Trainings;
- Food Bank;
- Small Scale Community Physical Infrastructure (CPI) Schemes
- Low Cost Housing
- Revolving fund for Agriculture / Live Stock / Enterprise

PROJECT COMPONENTS:
Project has three major components;

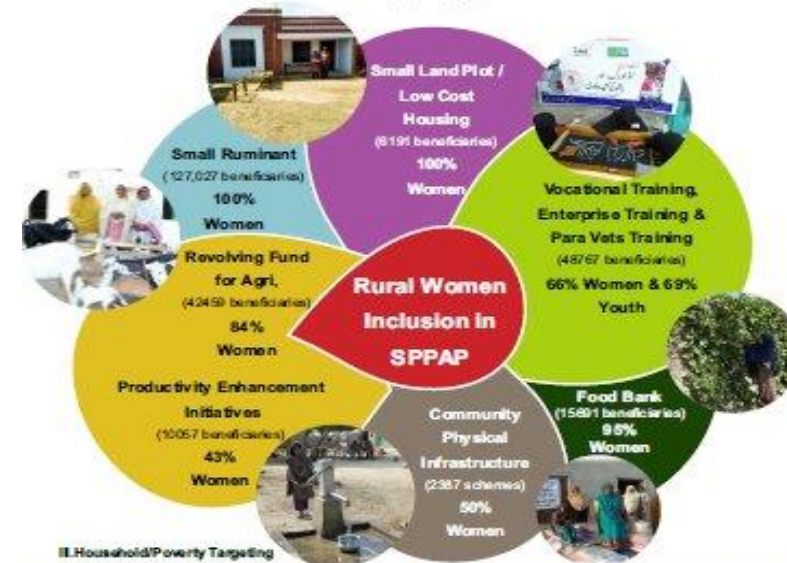
- Livelihood Enhancement
- Agriculture & Livestock Development
- Project Management

OUTREACH:
Ten poorest districts; Bahawalpur, Bahawalnagar, Muzaffargarh, Rajan Pur, DG Khan, Rahim Yar Khan, Layyah, Bhakkar, Mianwali & Khushab.

TARGETING APPROACH OF SPPAP:

I. Geographical Targeting
For better results in term of poverty reduction, Project has started the implementation from the poorest tehsil and the poorest rural Union Councils in the targeted districts.

II. Gender Targeting/Women Empowerment
SPPAP is a highly gender sensitive project and using gender targeting approach, project has ensured and addressed strategic gender interests and the practical gender needs of women. All the interventions of SPPAP have been designed based on the gender issues prevailing in the rural areas of targeted poorest districts. Inclusion of women has been ensured by specifying women as either sole beneficiaries of an intervention or by specifying quotas for them.



III. Household/Poverty Targeting
To include the poorest households in project activities, SPPAP is following a focused poverty targeting approach by using the information generated by the BISP, National Socio Economic Registry Poverty Card Survey to identify households in the poorest poverty bands 0-32. The results of the Poverty Score Card (PSC) are further validated by participating Community Organizations through Social Mobilization Partner.



Project Management Unit (PMU)
House #55113 near Shehwal Road, Model Town A, Bahawalpur, Pakistan
Tel: 062-6252540, Fax: 062-655541, Email: sppap-pjpn@gmail.com
Web: <http://www.sppap.gov.pk>, <https://www.facebook.com/SPPAP/Pages/Targeting>

By session's end, we should know



- What are the challenges in making rural livelihood more resilient and sustainable? (in context of ongoing poverty graduation programs)
- How to attract younger generation towards Agriculture and related industry, both on-farm and off-farm livelihood opportunities? (Access to finance and land ownership)
- How to bring youth capacity building development agenda into successful livelihood discussions in context of skill development, vocational training, E-Commerce ?
- What are some innovative livelihoods' ways and strategies to build resilience of vulnerable communities particularly in rural areas . (ecotourism, agri-tourism, organic farming, business incubation centres with local products)
- How can we protect vulnerable small holder farmers from impact of climate change? What solutions, instruments, and practices are available to them to adopt climate resilient practices?
- The livelihoods support interventions need strong collaboration among all stakeholders (government, development partners, community) to diversify inclusive sustainable livelihood opportunities. Elaborate it in your respective organization perspective.



Thank You