

SESSION 7

ROLE OF EVIDENCE AND RESEARCH IN SOCIAL PROTECTION

Building Block 4: Programmes and Delivery Systems for Adaptive Social Protection

Topic: Feasibility Study on Social Protection for Health and Climate Resilience (KfW)

Maheen Zahra, OPM

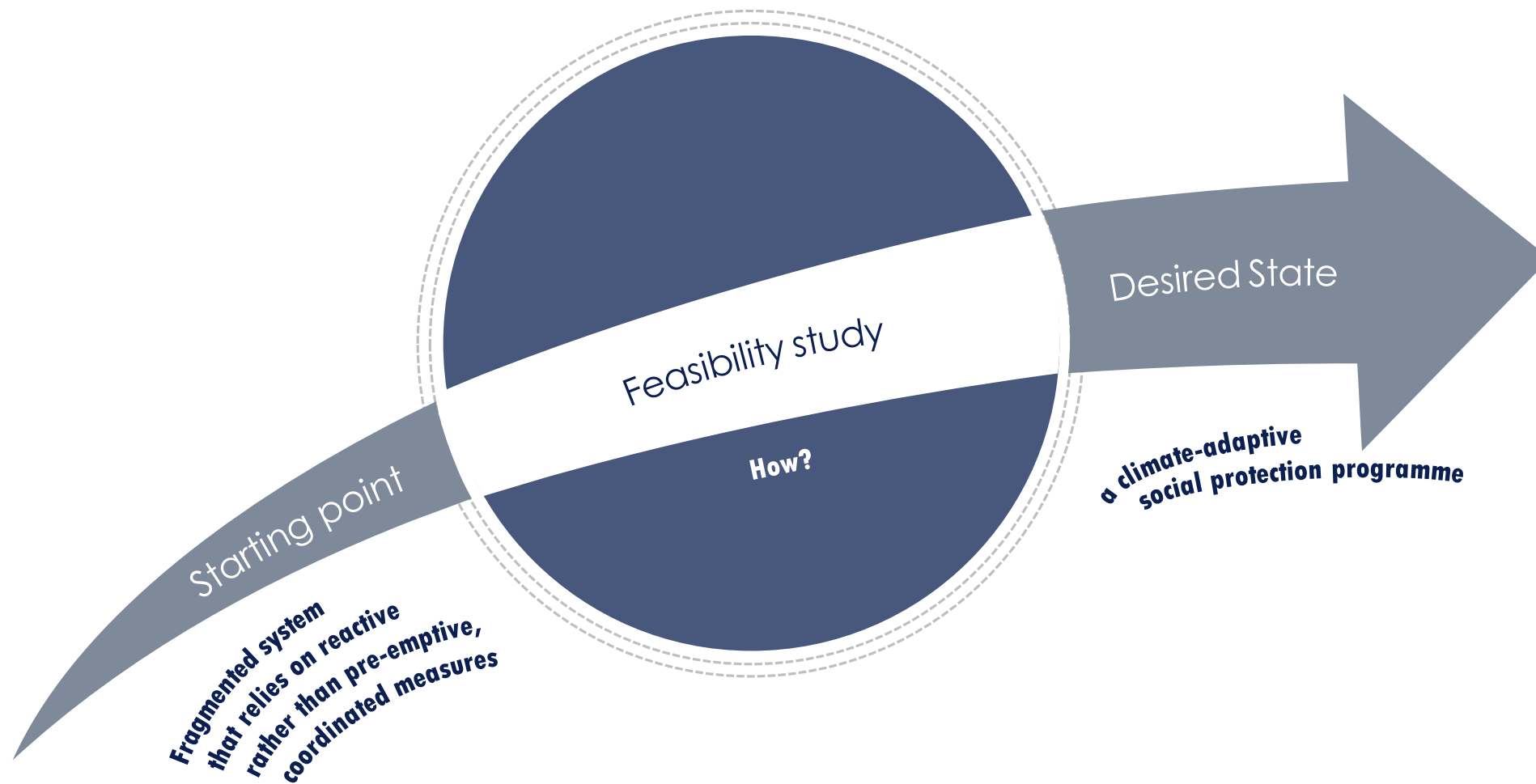


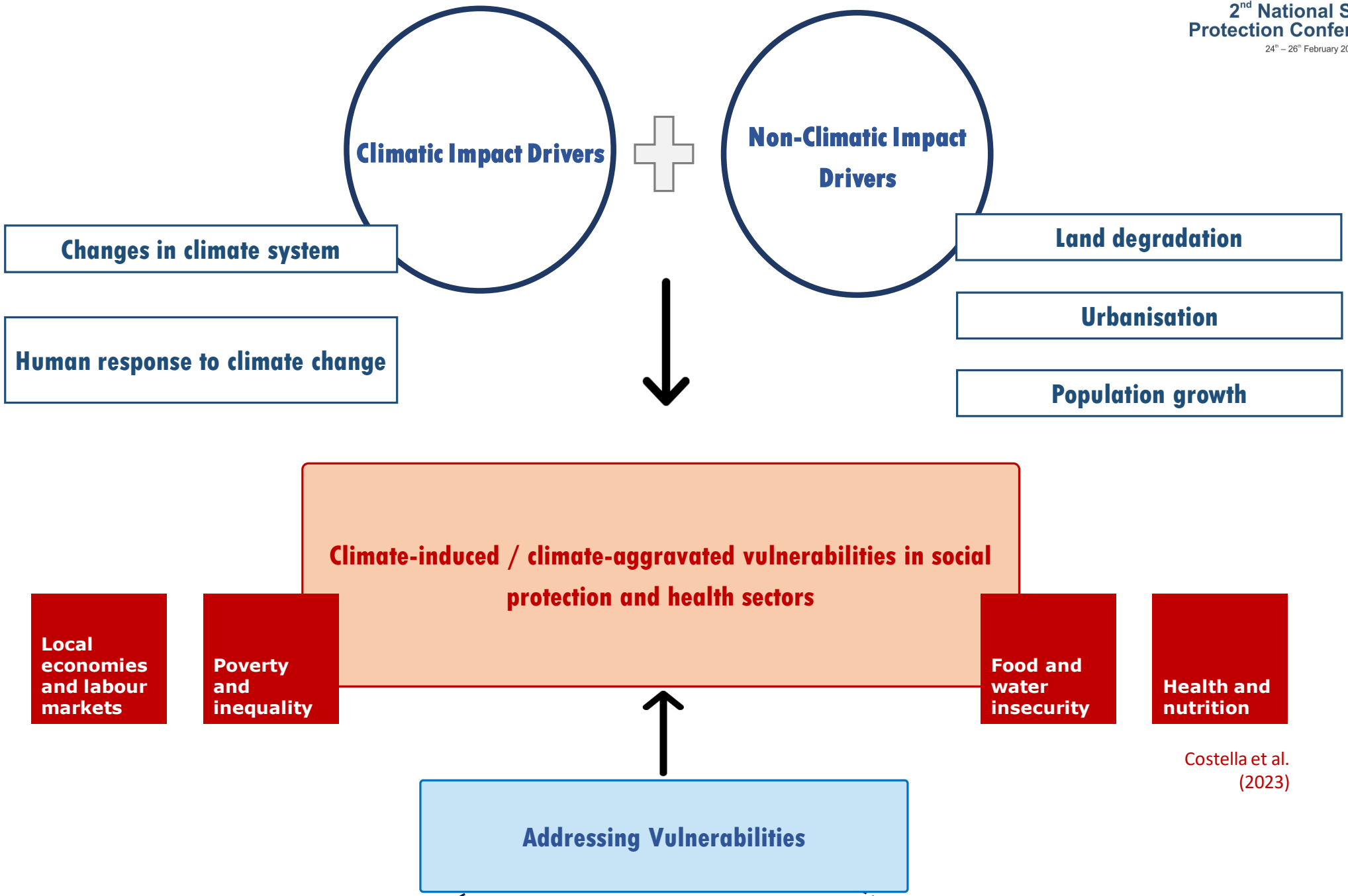




Support the **long-term
climate resilience** of the
country's vulnerable poor
through a climate-
adaptive social
protection programme

Component 2 of
KfW's support
*Social Protection
for Health and
Climate Resilience*





Costella et al. (2023)



Addressing Vulnerabilities

Envisioned, ex ante adaptation

Conventional, ex post shock response

Climate-adaptive social protection
to help vulnerable populations

Prepare **Cope** **Adapt**

Such as support in providing cash transfers to flood-affected households

Institutional arrangements	Finance
Programs and delivery systems	Data and information

Intersectoral Linkages

Disaster response and recovery

Component 1 of KfW's support *Social Protection for Health and Climate Resilience*

Prepare

Cope

Adapt

Institutional arrangements

Finance

Programs and delivery systems

Data and information

Four components of ASP

Intersectoral Linkages

Disaster response and recovery

Poverty and health vulnerability alleviation

Climate-integrated preparedness

Component 1 of KfW's support *Social Protection for Health and Climate Resilience*

Long-term climate and health resilience of vulnerable populations



Understand

- Systems-level context
- Data availability within BISP
- Disbursement systems and mechanisms

Engage

- Actors active in similar initiatives
- Stakeholders from GOP and other development partners



Explore

- Integration of social protection needs into ongoing climate risk assessment and climate change modelling

Identify

- Early warning and anticipatory action strategies, mechanisms, and financing options
- Staffing and capacity needs
- Synergies with other programmes



Develop

- Climate-adaptive social protection programme
- Approach for identifying population and geographic areas that need most support

Propose

- Recommendations for inter-sectoral cooperation
- Recommendations for BISP's digital infrastructure integration with climate modeling and risk assessment actors
- Alternative measures for cash transfers
- Synergistic measures such as behavioural change and norm-shifting
- Measures for cooperation with the provincial level initiatives
- Accompanying research portfolio



- Stakeholder engagement
 - 50+ KIIs in Islamabad, Sindh and Khyber Pakhtunkhwa
 - 4 FGDs with BISP beneficiaries
- Desk review
 - Conceptualisation
 - Evidence base on potential measures
- Potential project measures
 - Several brainstorming sessions
 - Longlisting, interim feedback, shortlisting, refining



Understand

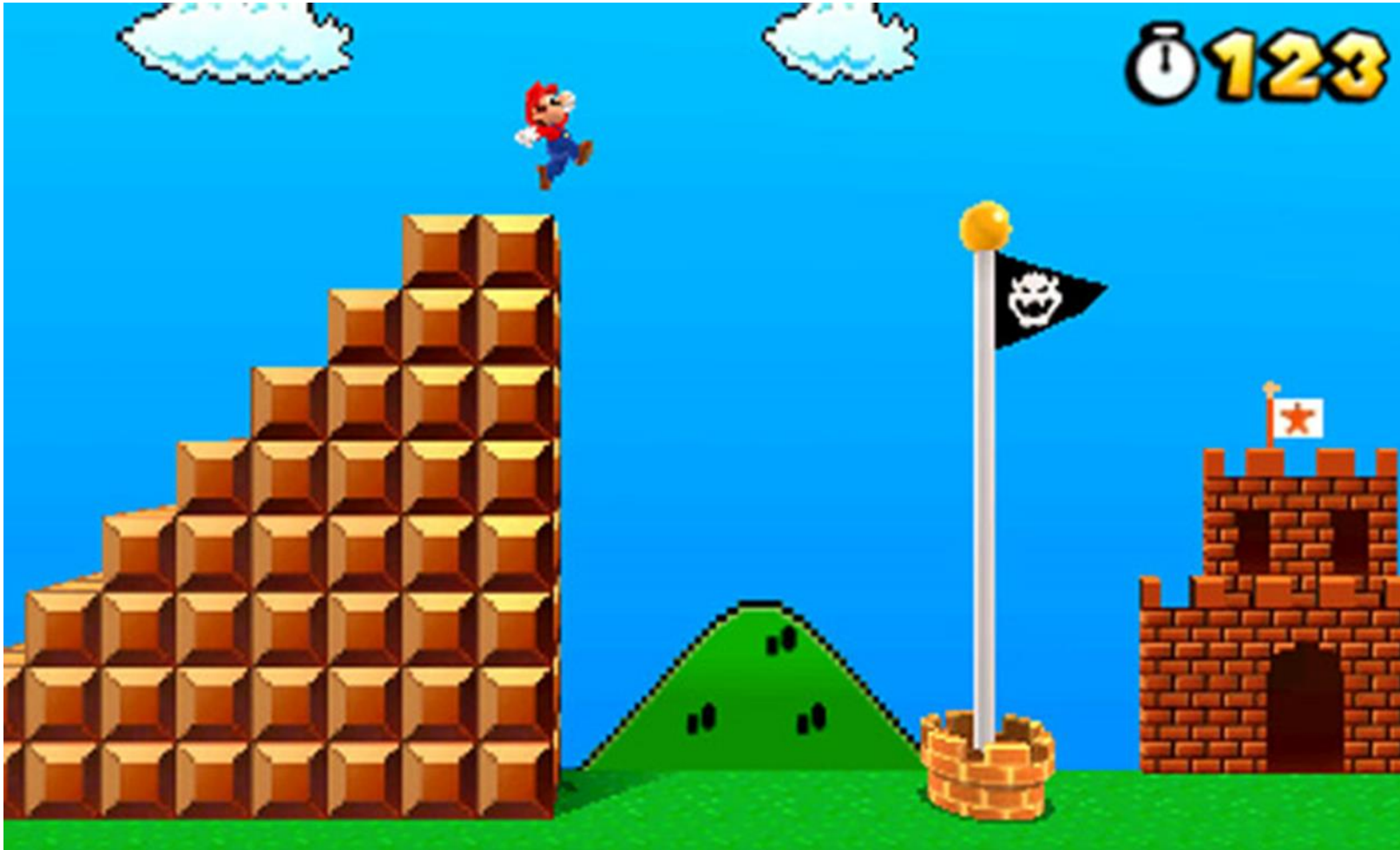
Engage

Explore

Identify

Develop

Propose



SESSION

7

ROLE OF EVIDENCE AND RESEARCH IN SOCIAL PROTECTION

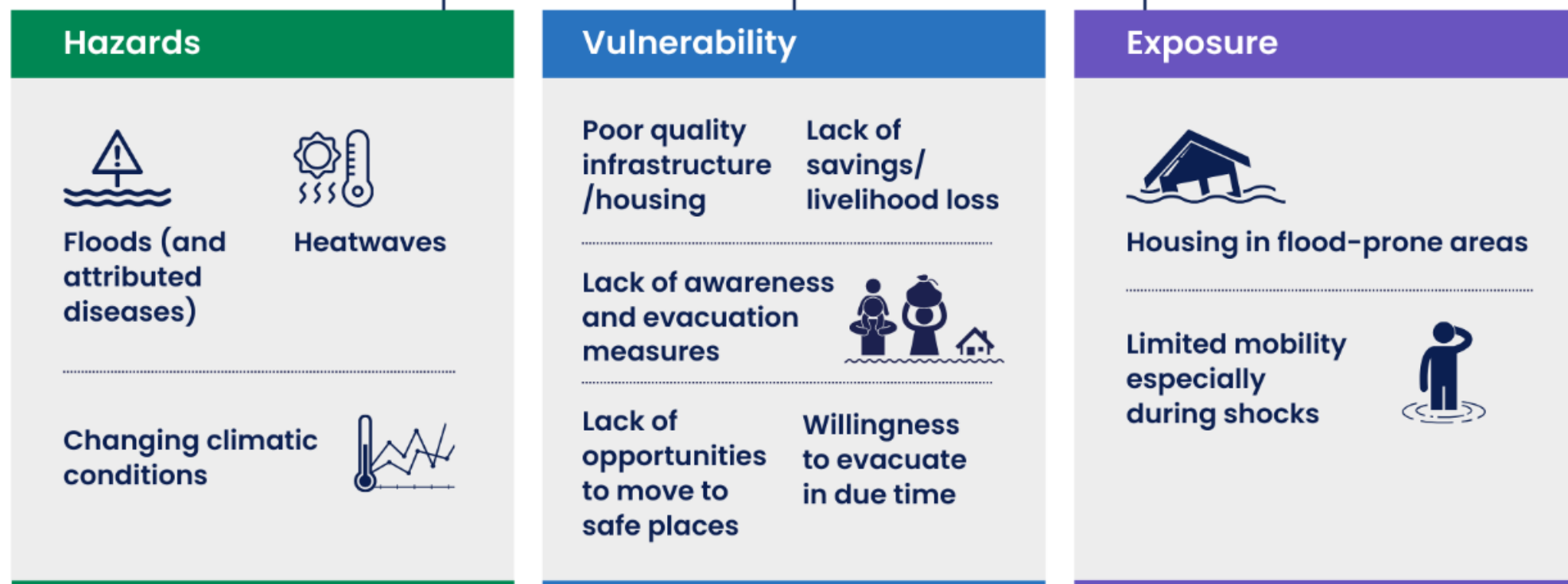
2nd National Social
Protection Conference

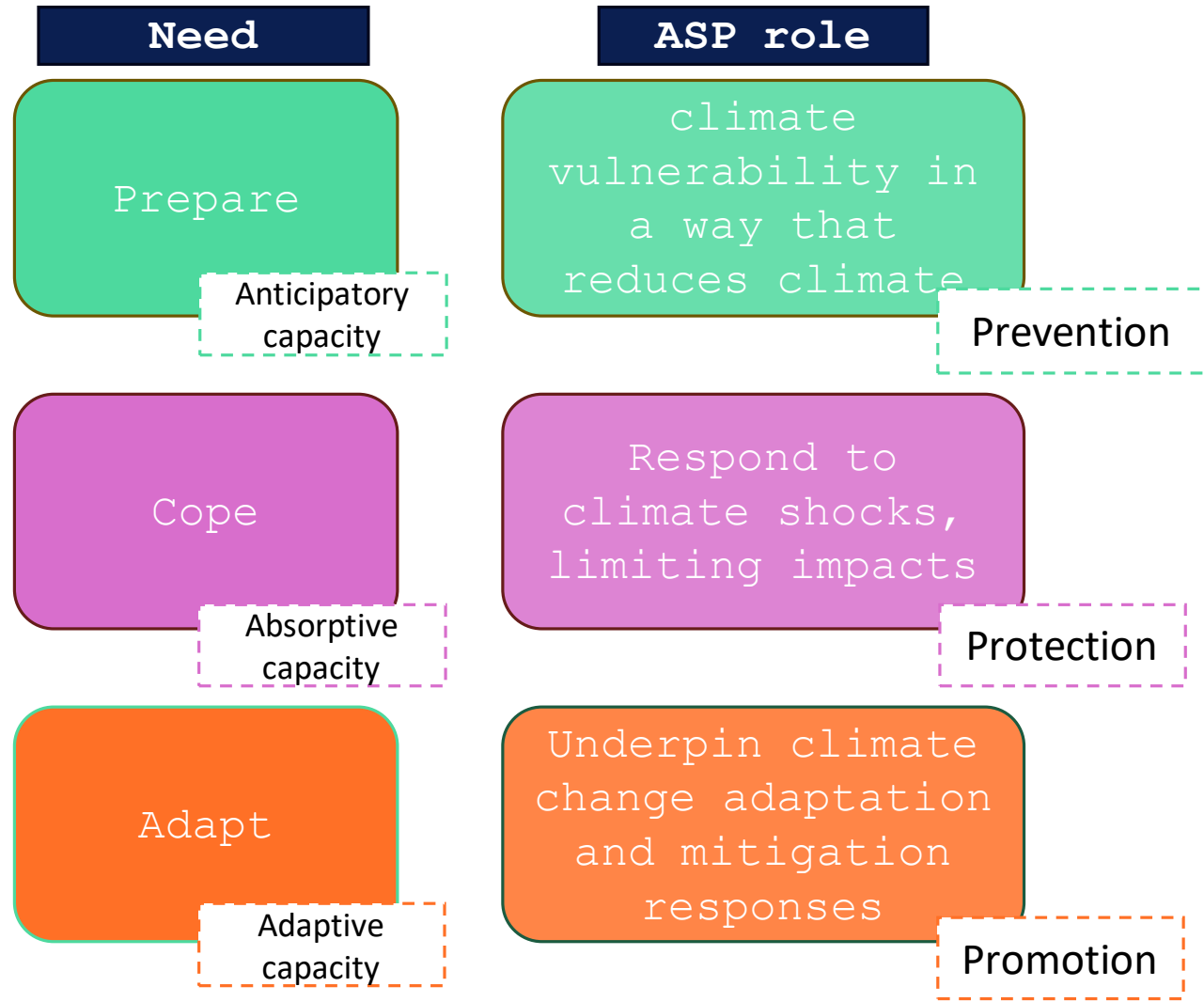
24th – 26th February 2025 | Karachi



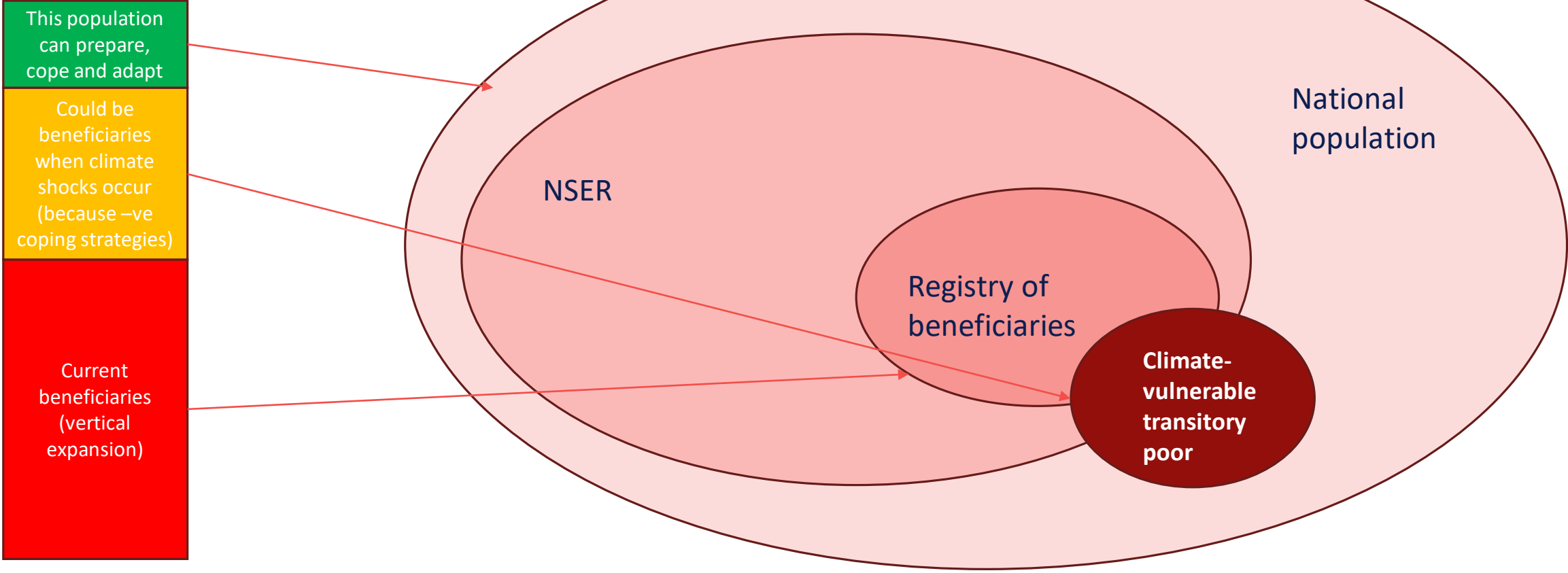


At-risk communities



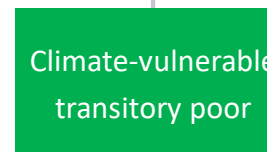


Three 'windows' of resilience

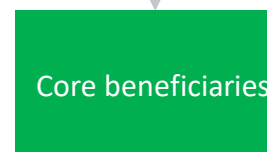




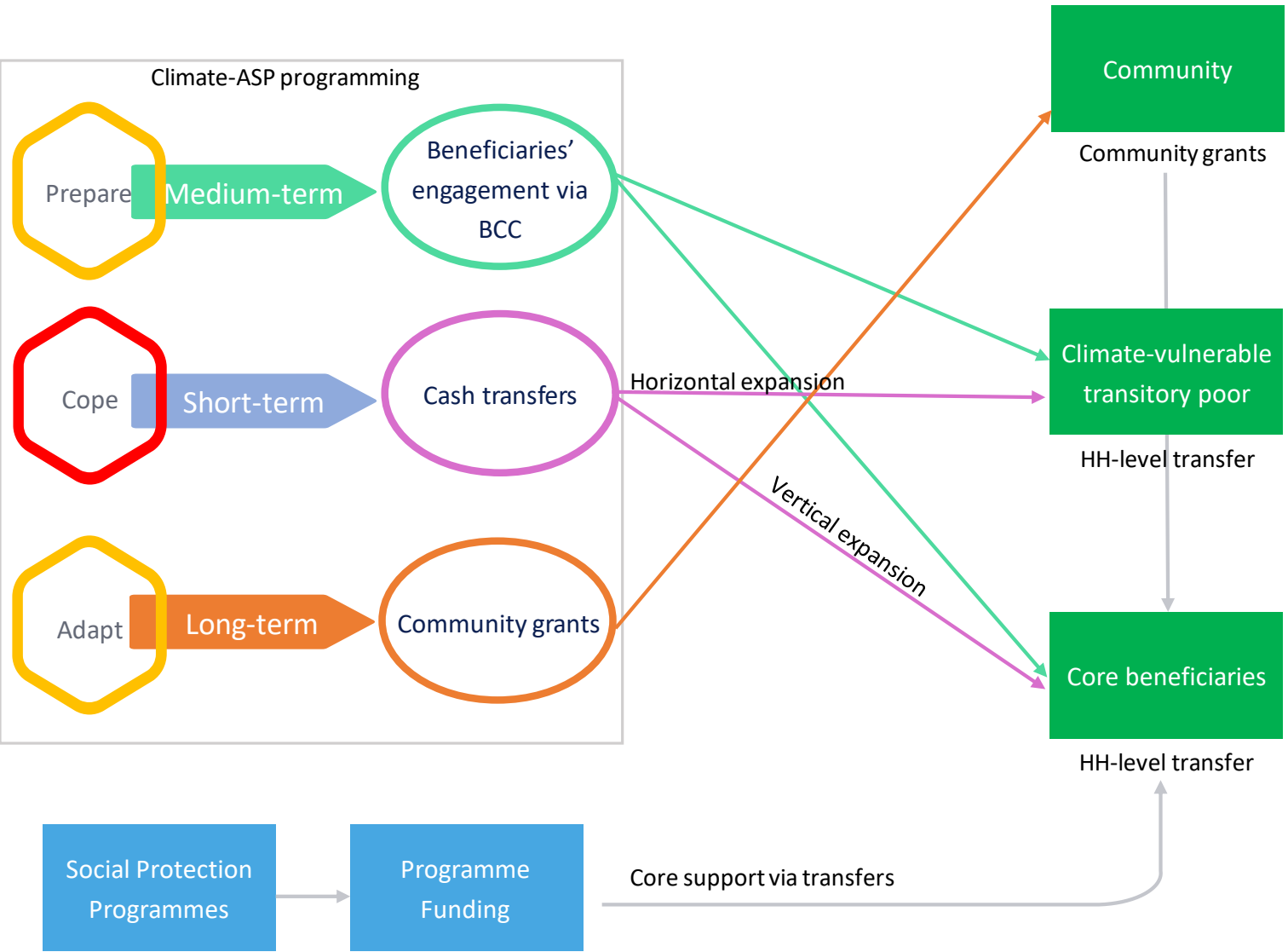
Community grants

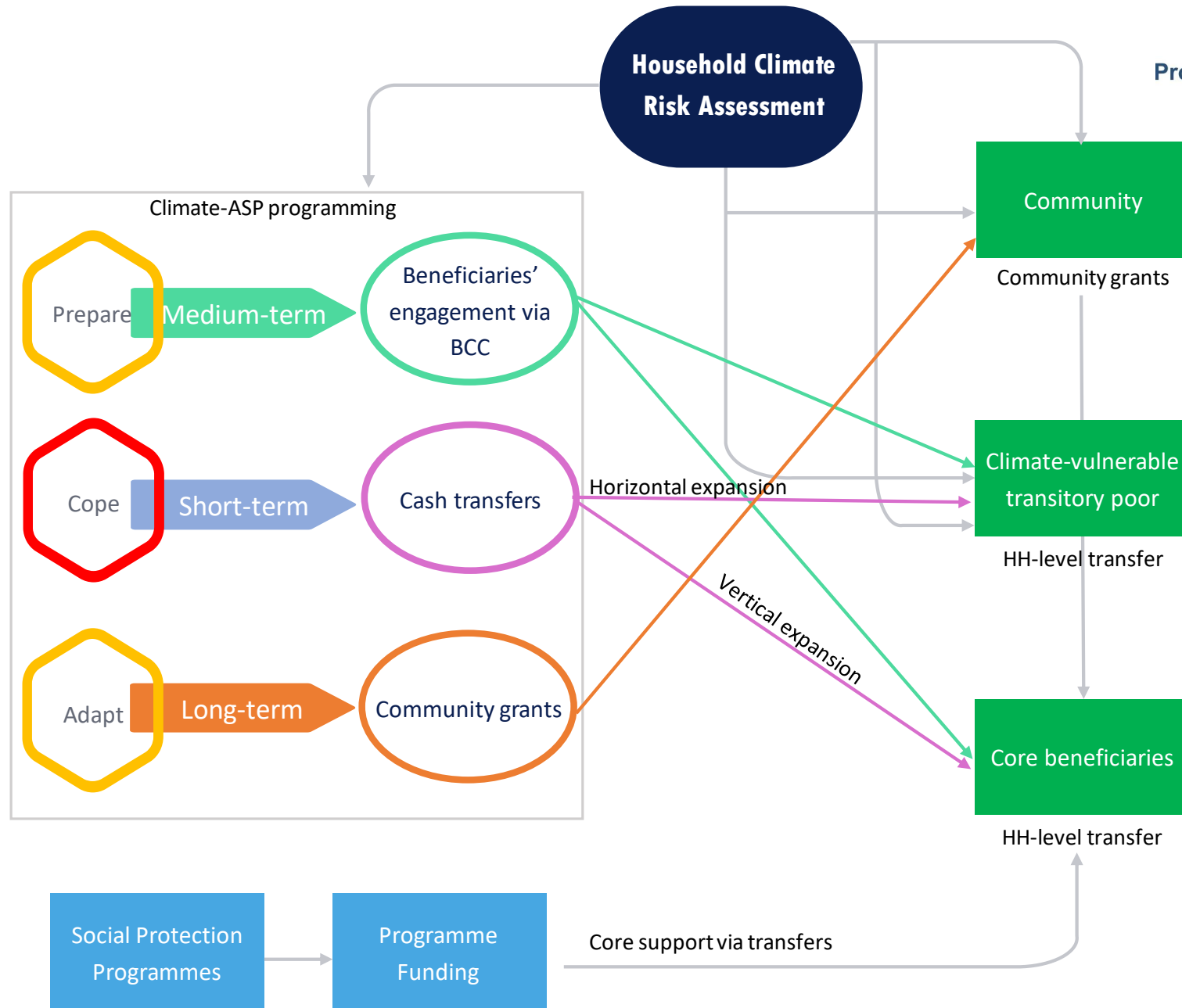


HH-level transfer



HH-level transfer







Spatial Platform for Household Climate Risk Assessment

Home

Click on the layers to display spatial data on natural hazards on the map.

Historical data

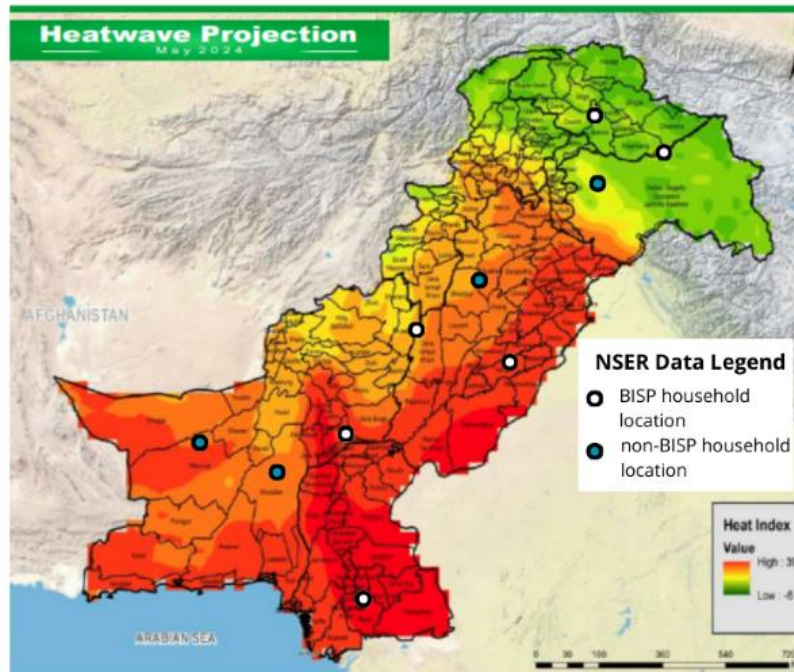
- Heatwave
- Drought
- Flood
- ...

Future projections

- Heatwave
- Drought
- Flood
- ...

About the Data Platform

This data platform integrates socio-economic data from NSER and disaster data from NDMA, PDMAs, PMD, NDRMF, and other sources, to inform household climate risk and support effective targeting of ASP programmes. Navigate through the left panel to select layers of natural hazards and map them together with locations of NSER households. Data on hazards, exposure, and vulnerability will be displayed in summary tables to inform household climate risk assessments.



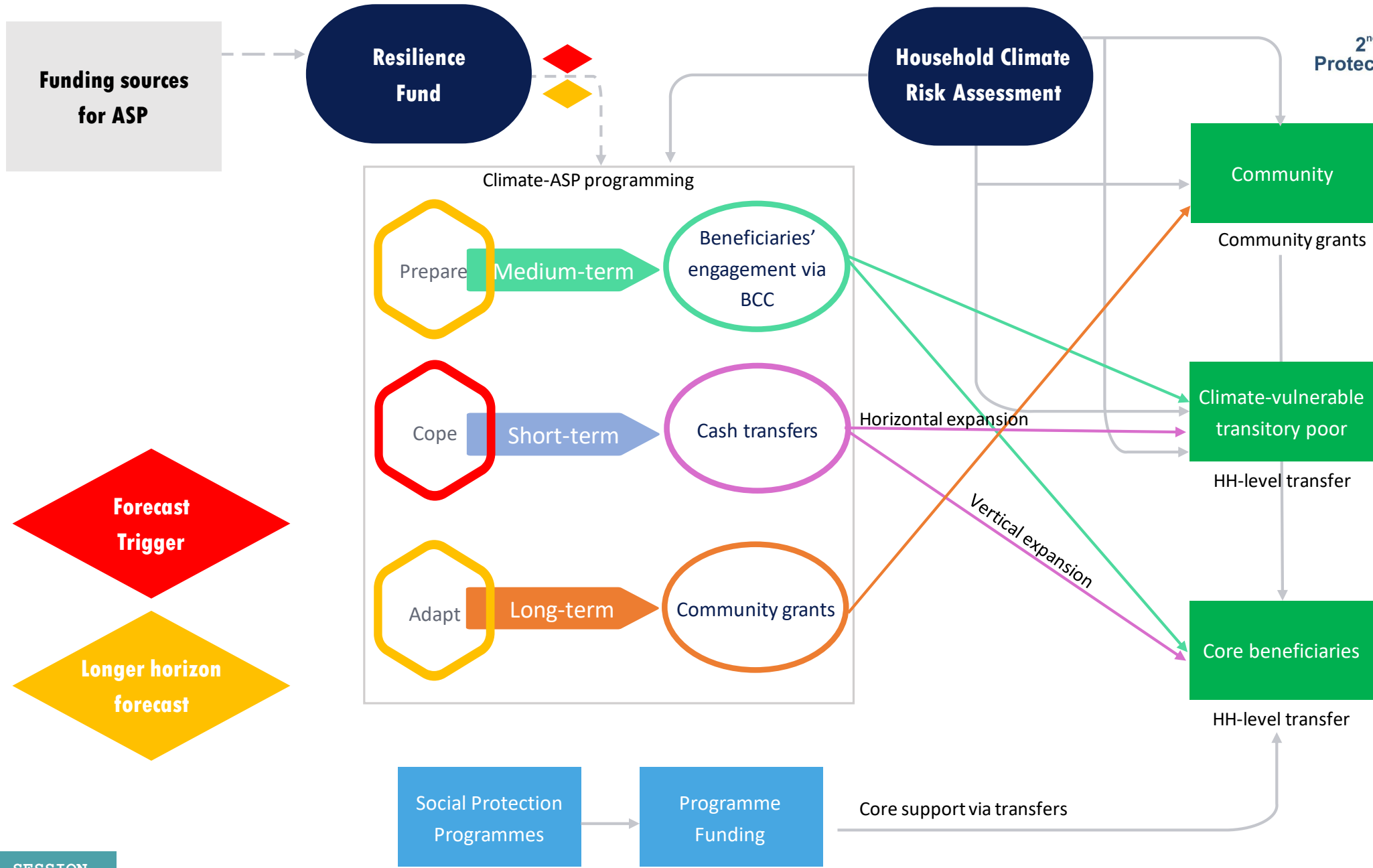
Source: NDMA May 2024 Heatwave alert at www.ndma.gov.pk

Table 1: List of climate vulnerable households

HH ID	Heat Index Value	Flood risk	Disability	PMT score
56328	39	High	Yes	28
83647	38	High	No	35

Table 2: Tehsils with the largest number of climate vulnerable households

Tehsil ID	Number of households vulnerable to heat waves
56328	32,384
83647	18,349



Forecast Trigger

Longer horizon forecast

