

SESSION 6

LATEST INTERVENTIONS IN SOCIAL PROTECTION

Building Block 4: Programmes and Delivery Systems for Adaptive Social Protection

Alba Riobo Souto, Policy Officer, Economic and Social Rights, DG INTPA





EU longstanding approach to social protection

Move beyond **fragmented social protection schemes** to **comprehensive social protection systems**. Reinforcing nationally owned systems, sustainable financing focusing mainly on progressive taxation through DRM and PFM, rather than on donor funding.

Move beyond poverty-targeted schemes and gradually support **Universal Social Protection** throughout the life cycle (RBA, SDGs)

Gradually, escalating cash transfers towards more integrated social protection systems that also integrate contributory social security.

New innovative approaches – the Global Gateway

2nd National Social

Protection Conference

24th – 26th February 2025 | Karachi



Conceptual framework for integrating social protection in the GG (rationale-why)

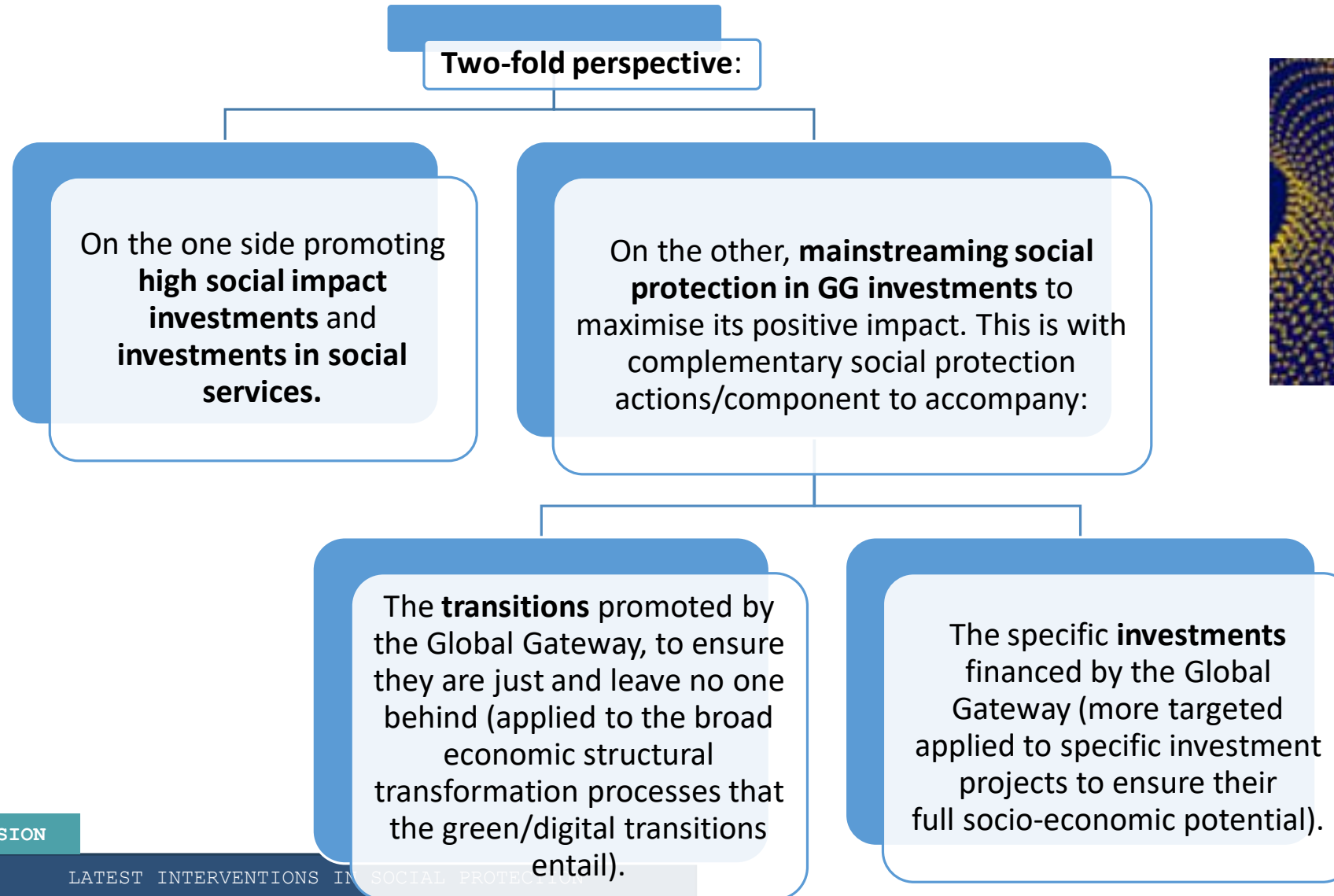
- ❖ Social Protection transfers and schemes provide income security :
 - So that households can continue investing in education, health or nutrition of the **future workforce**, avoiding negative coping strategies.
 - That frees financial **capacity for entrepreneurship**, allowing for investing in ventures in the new green and digital sectors or incentivize green investments in existing enterprises.
 - That serves as a buffer for **climate change negative effects** (shock-responsive/adaptive SP, DRR) or accompany investments to realise their full socio-economic potential.
- ❖ Access to social protection ensures **quality jobs** as one of the four pillars of Decent Work:
 - **Enhancing labour demand** through quality jobs in emerging sectors that provide access to social protection benefits.
 - **Enhancing labour supply** when social protection transfers are combined by skills development and ALMPs providing people with the resources to further develop skills and access new employment opportunities.
- ❖ **Mitigating the potential negative effects of transitions** on income, jobs and livelihoods.
 - i. For **job losers in contracting sectors** (unemployment benefits, early pensions, severance pay, public works, compensation schemes, etc.).
 - ii. Other impact on livelihoods of people and communities.



New innovative approaches – the Global Gateway



Conceptual framework for integrating social protection in the GG (strategy -how)



Innovative **financing mechanisms** for social protection financing or financing social services: social bonds; PPPs

New innovative approaches – the Global Gateway



Example

EU-ILO project: LAO PDR - Reducing vulnerability in Lao PDR: Advancing social protection and labour rights and entitlements in the coffee, tea and forestry sectors - Phase II (SOLAR II) - EUR 3,5M

Within the framework of the “Team Europe Partnership in the Lao PDR to increase quality Trade, Investment and Connectivity in Agriculture & forestry (TICAF)”, a GG flagship supporting coffee, tea and timber value chains.

TICAF has **5 components**: i. coffee & tea value chains, ii. value chains and sustainable use of forests, iii. private investment, iv. Increased connectivity to markets and v. decent work and SP.

Overall Objective: To promote labour rights and improve access to social protection and occupational safety and health for coffee, tea, and forestry sector workers in Lao PDR.

Specific objective 1:
Extended and improved social protection and OSH through: law compliance including social security at district level, institution strengthening

Specific Objective 2: Workers are organized and empowered to promote and protect their labour rights: awareness on benefits of social security registration, reinforcement of informal workers' organizations, CSOs, sectoral associations, small and medium producers, local authorities, and local media to effectively advocate for the rights of informal coffee, tea, and forestry sector workers, supporting informal women's workers associations.

