

SESSION 4

TRANSFORMING SOCIAL PROTECTION THROUGH INSTRUMENT IN DIGITALIZATION

Building Block 3 : Data and Information for Social Protection

NAVEED AKBAR, Director General Cash Transfer, BISP

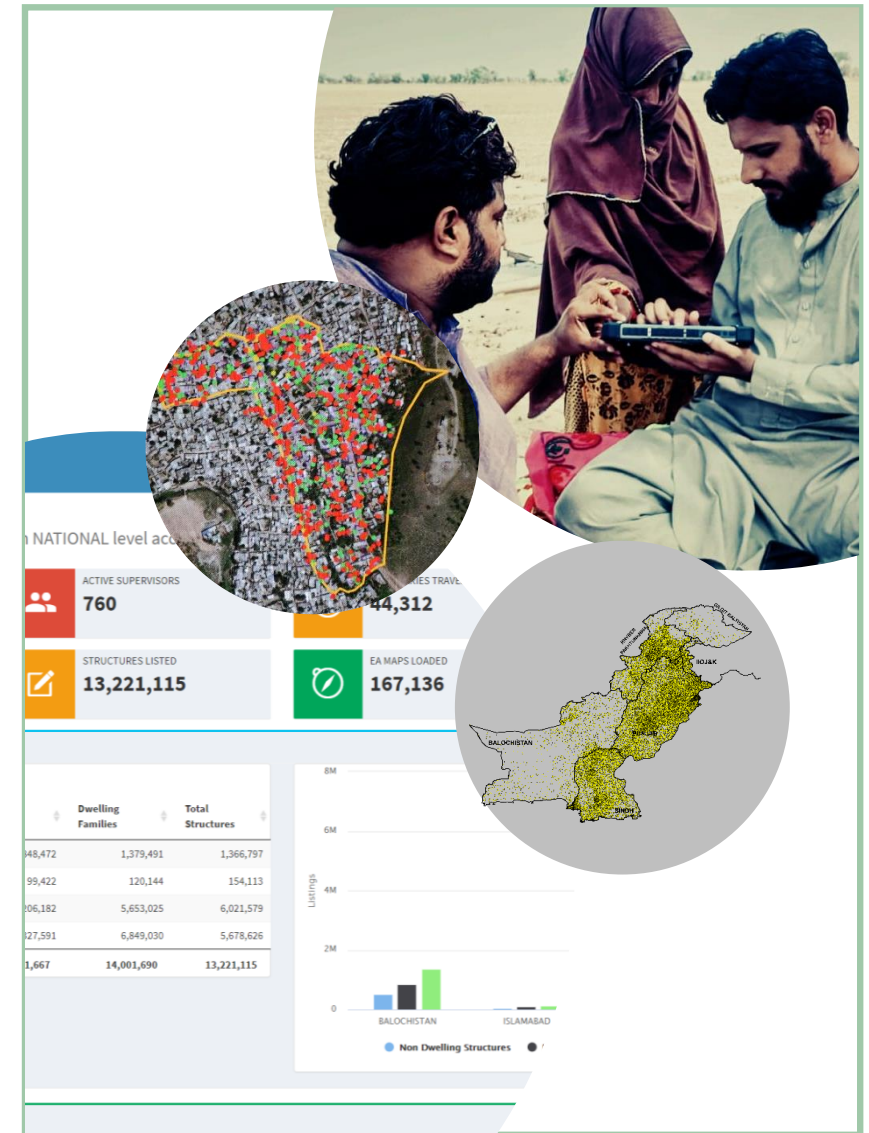


INDEX

- 01 Evolution of Targeting
- 02 System
- 03 Digital Payment Systems
- 04 Digital Evolution in CCTs
- 05 Impact of Digital Investments

SESSION

DIGITAL INFRASTRUCTURE FOR ADAPTIVE SOCIAL PROTECTION



Core Initiatives of BISP

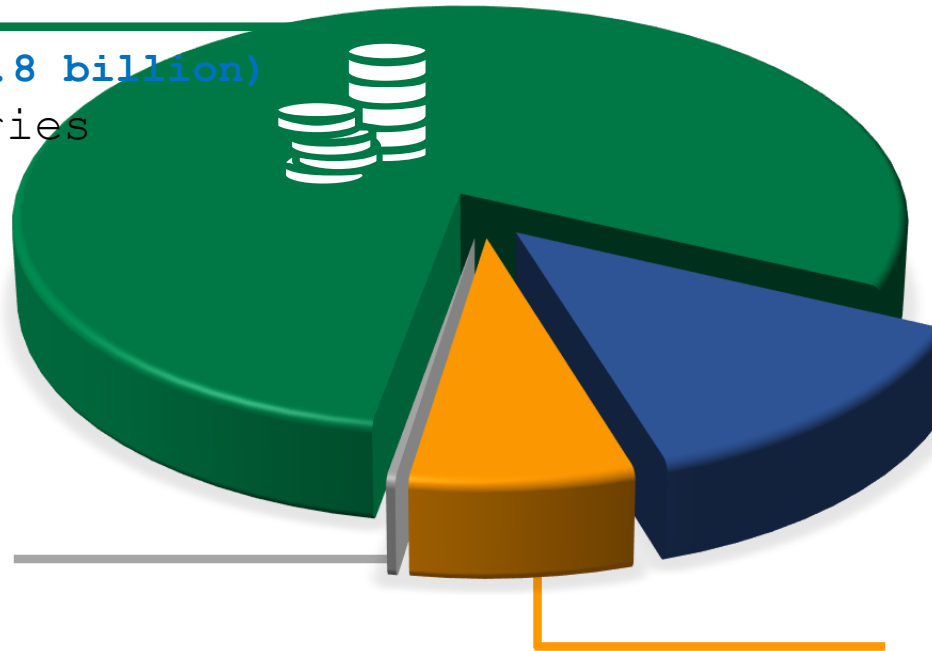
Total Outlay: Rs. 598.71 billion
(USD 2.3 billion)

Benazir Kafaalat Program (UCT)

- **Rs. 461 billion (USD 1.8 billion)**
- 9.8 million beneficiaries

Benazir Taleemi Wazaif Program (CCT Education)

- **Rs. 77 billion (USD 308 million)**
- 10.7 million children



BISP Scholarships for Undergraduates

- **Rs. 1.7 billion (USD 0.68 million)**
- 10,000 scholarship awardees

1 USD ≈ PKR 270

Benazir Nashonuma Program (CCT Health & Nutrition)

- **Rs. 42 billion (USD 168 million)**
- 2.7 million pregnant and lactating women & infants

01

EVOLUTION OF DIGITAL TARGETING SYSTEM

SESSION

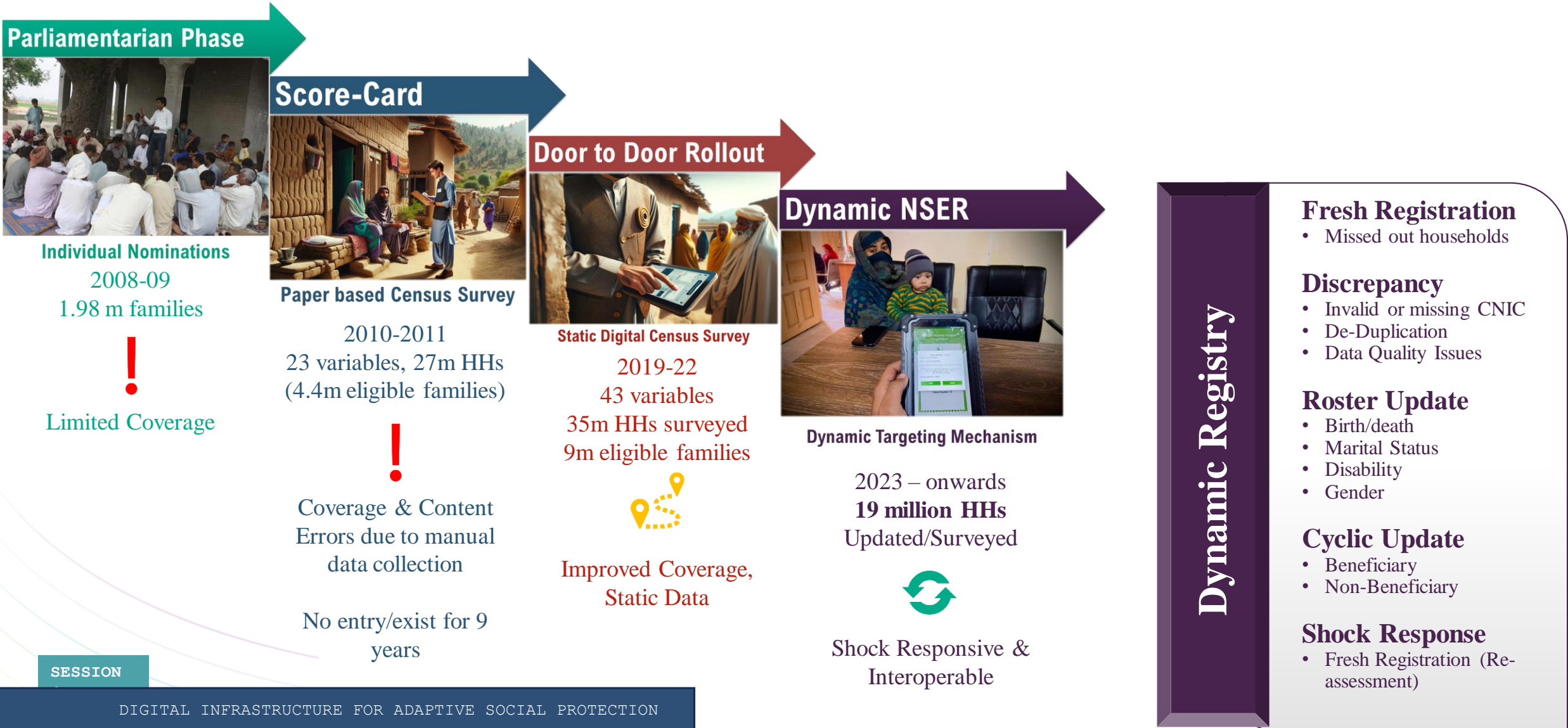
DIGITAL INFRASTRUCTURE FOR ADAPTIVE SOCIAL PROTECTION

NATIONAL SOCIO-ECONOMIC REGISTRY

A Journey towards Digital Dynamic Registry

- NSER is working as the **targeting platform** for all major **Social Protection programs** of the country.
- **Proxy Means Test** (PMT) approach used for assessing the socio-economic status of the households (HHs)
- NSER has **evolved over the years** as the most reliable dataset used by a variety of stakeholders including, public sector institutions, policy think-tanks and development agencies for designing social protection and poverty alleviation programs and interventions

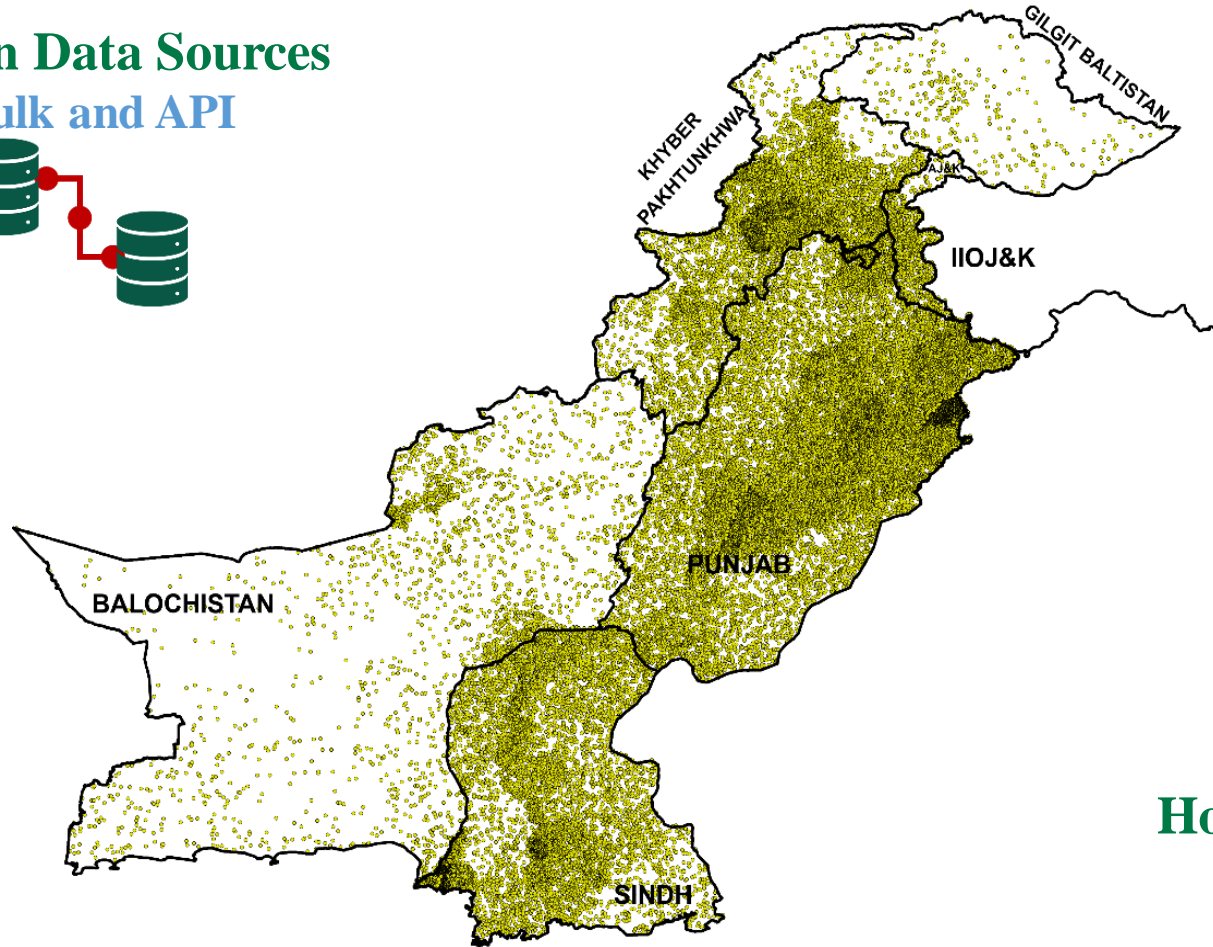
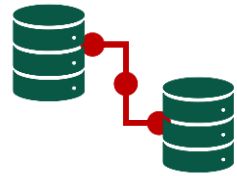
EVOLUTION OF NSER (Paper-based to Digital Dynamic Registry)



REGISTRY COVERAGE & METHODOLOGIES

Admin Data Sources

Bulk and API

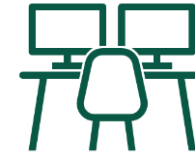


● = 10,000 HH

38.7 million households

Dynamic Registry Centres

647



Mobile Registration Vehicles

25



Home Visits, Hard-to-Reach Area Sweep

1000 Operators



02

EVOLUTION OF TECHNOLOGY ENABLED PAYMENT SYSTEM

SESSION

DIGITAL INFRASTRUCTURE FOR ADAPTIVE SOCIAL PROTECTION

EVOLUTION OF DIGITAL PAYMENT SYSTEM



Pak Post Money Order
2008



Benazir Smart Card
April 2010



Mobile Banking
Dec 2010



Benazir Debit Card
Feb 2012



Biometric Verification System
National Rollout June 2016

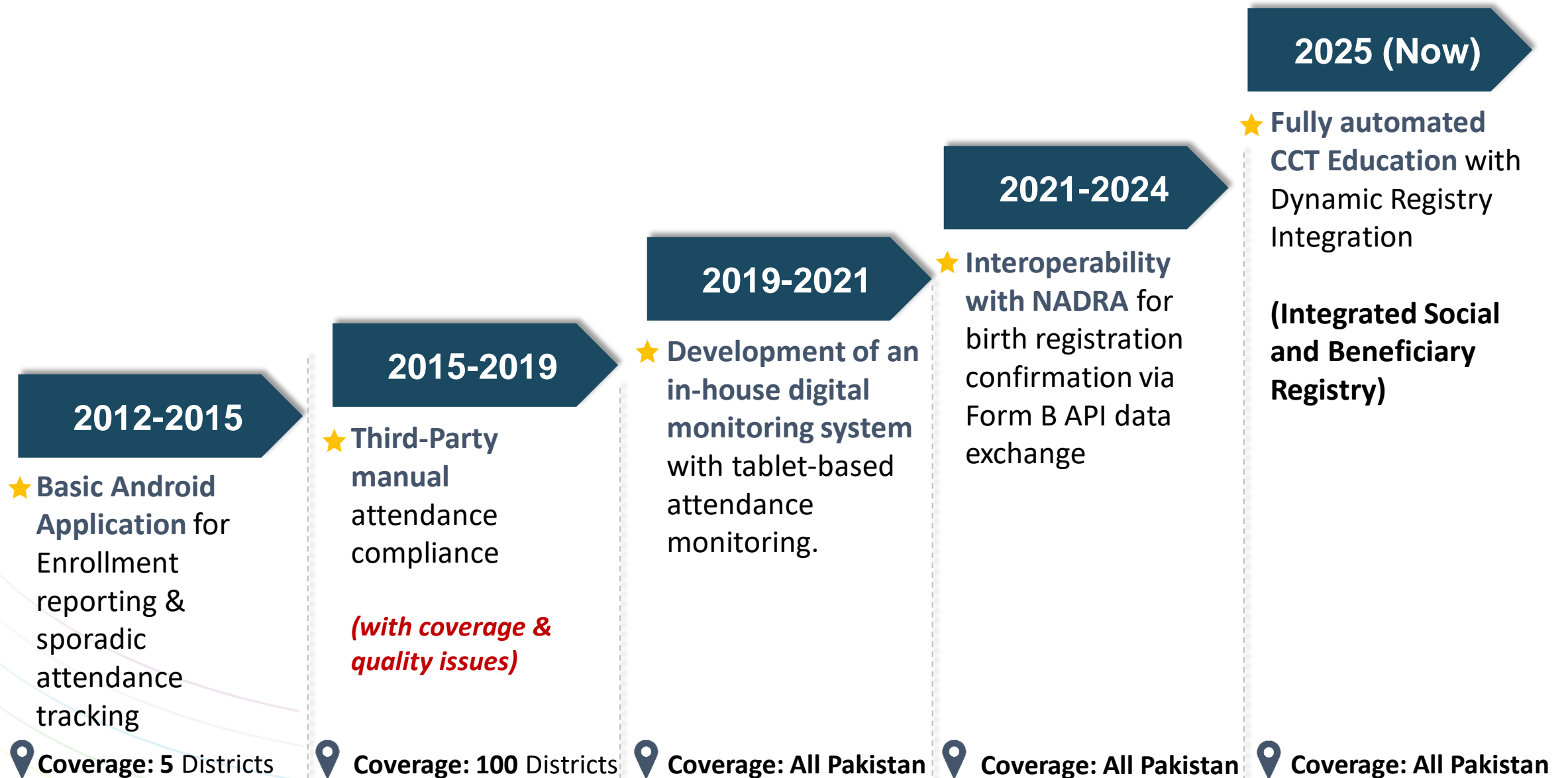
03

Digital Evolution in CCTs

SESSION

DIGITAL INFRASTRUCTURE FOR ADAPTIVE SOCIAL PROTECTION

Digitally Transformed CCT Education Program



Digitally Transformed CCT Nutrition Program

2020-2021

- ★ **BNP Basic Android Application Development for Enrollment reporting & registration**

📍 **Coverage: 15 Districts (50 FCs)**

2022-2023

- ★ **Improvement in the BNP Android Application in terms of program coverage from 15 to 157 districts**

📍 **Coverage: All Pakistan (556 FCs)**

2023 -2024

- ★ **Integration of the pilot adolescent nutrition component in the android application**

📍 **Coverage: All Pakistan (556 FCs)**

2024-2025

- ★ **On-the-go Stock Monitoring/View Application with the BNP Android Application**

📍 **Coverage: All Pakistan (556 FCs)**

2025-26

- ★ **Anticipated to have complete integration with Dynamic Registry**
- ★ **Integration of CMAM module with the BNP Android Application (planned)**
- ★ **Linking with EPI database for two-way immunization data exchange (planned)**

📍 **Coverage: All Pakistan (556 FCs)**

04

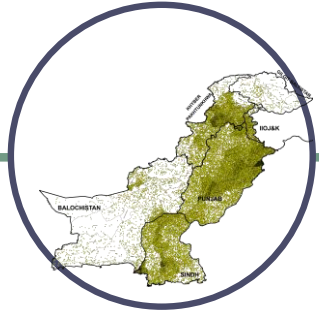
IMPACT OF DIGITAL INVESTMENTS

Case Studies of Emergency Response

SESSION

DIGITAL INFRASTRUCTURE FOR ADAPTIVE SOCIAL PROTECTION

UNVELING THE IMPACT OF DIGITAL TRANSFORMATION MEASURES



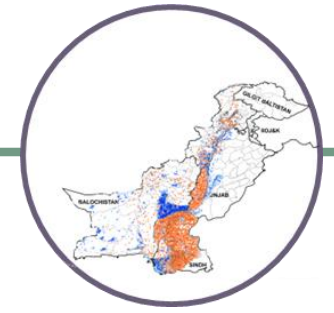
**Improved
Coverage &
Inclusion**



**Enhance
Efficiency &
Accuracy
through
Interoperabili
ty**



**Digital
Payments
ensured
transparency
and
financial
inclusion**

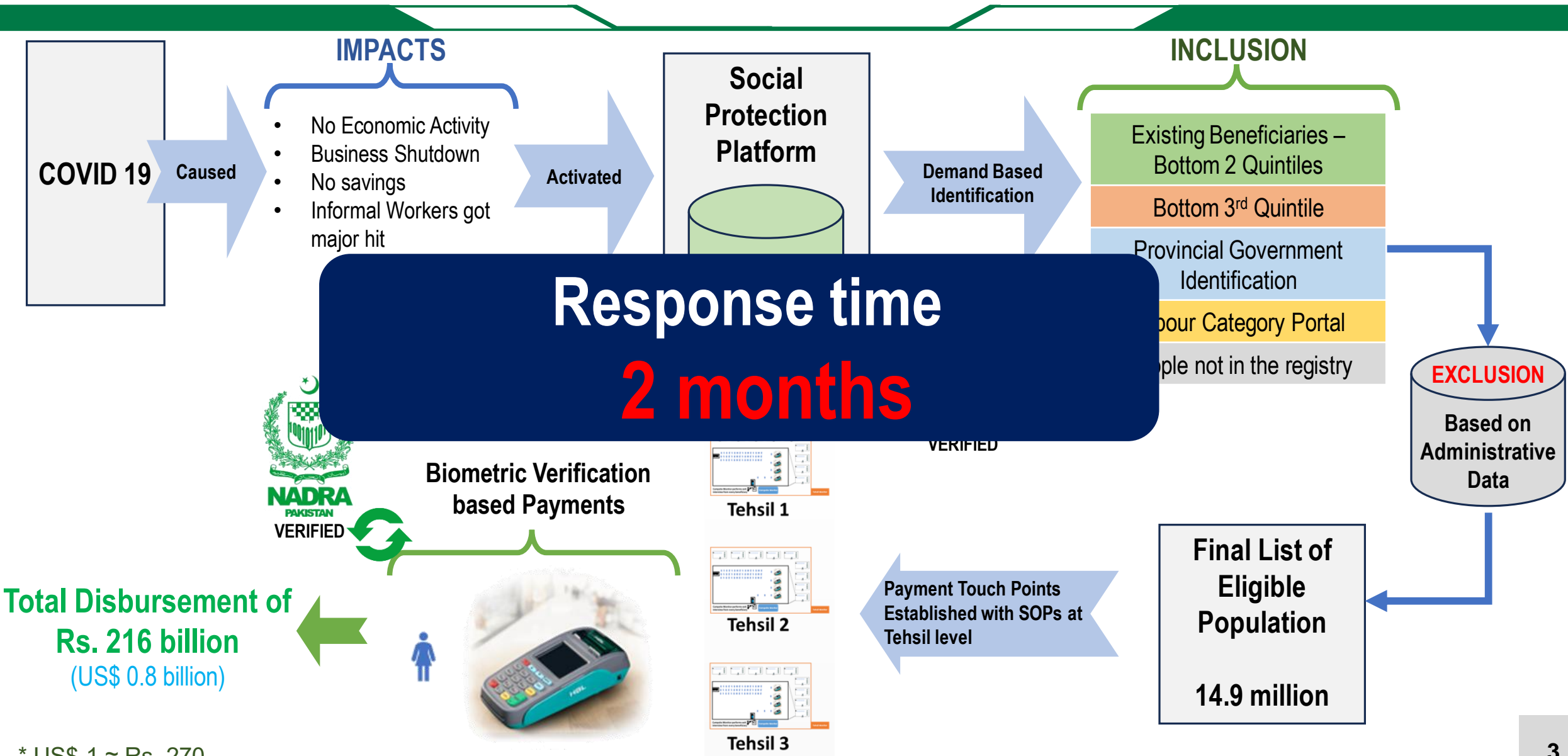


**Shock
Responsive**

SESSION

DIGITAL INFRASTRUCTURE FOR ADAPTIVE SOCIAL PROTECTION

COVID 19 Response



* US\$ 1 ≈ Rs. 270

Challenges & Course Corrections for Development & Implementation of SRSP system

Static data for over 9 years – no inclusion & exclusion

Regular update of database to mitigate inclusion and exclusion errors

Registry was not shock responsive as it did not cater to changes in socio-economic status of households

Shock responsive registry

Cost implications of door-to-door activity for each registry update cycle

Operational costs of registration & targeting have significantly reduced

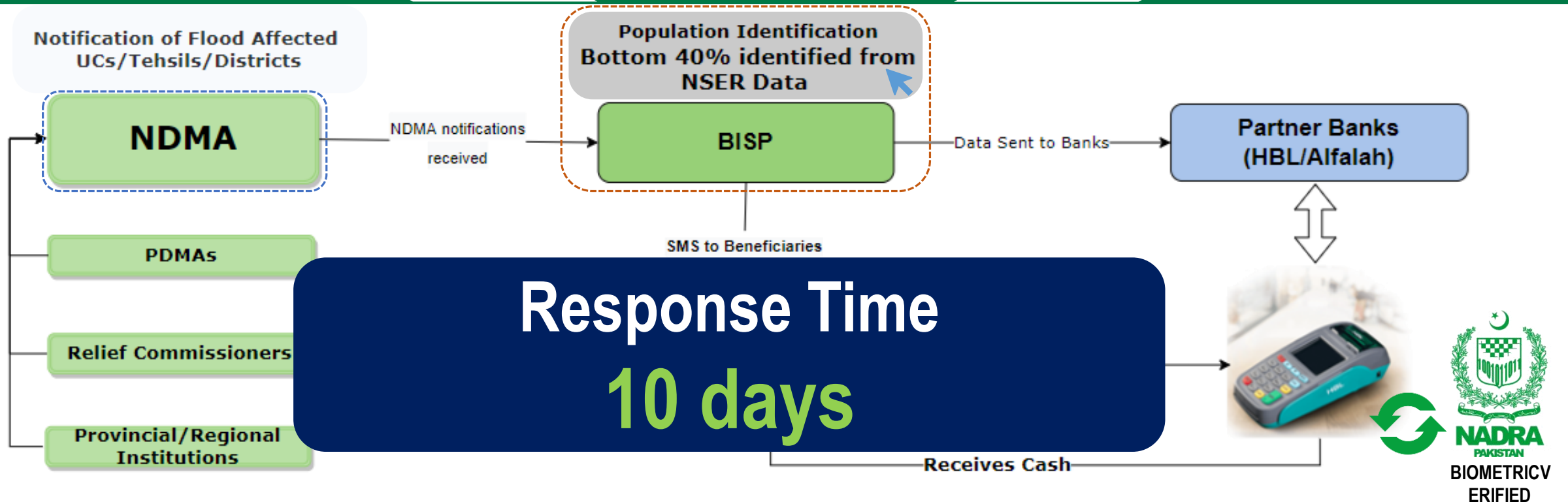
Payment mechanism had challenges, largely due to financial illiteracy and implementation of biometric based payment system

Beneficiary-centric payment model, with inclusion of all financial institutions

Lack of Administrative Data access, incompatibility for integration, lack of digitization, data completeness issues

Collaboration for API based two-way data exchanges and transfer

Flood Response 2022/23



• National Disaster Management Authorities (NDMA) with the support of respective Provincial Governments notified flood affected areas

Using BISP's National Socio-Economic Registry bottom 40% population was identified and through BISP's biometric payment system, Rs. 70 billion (~ US\$ 260 million) disbursed to 2.76 million affected families.

* US\$ 1 ≈ Rs. 270

05

WAY FORWARD

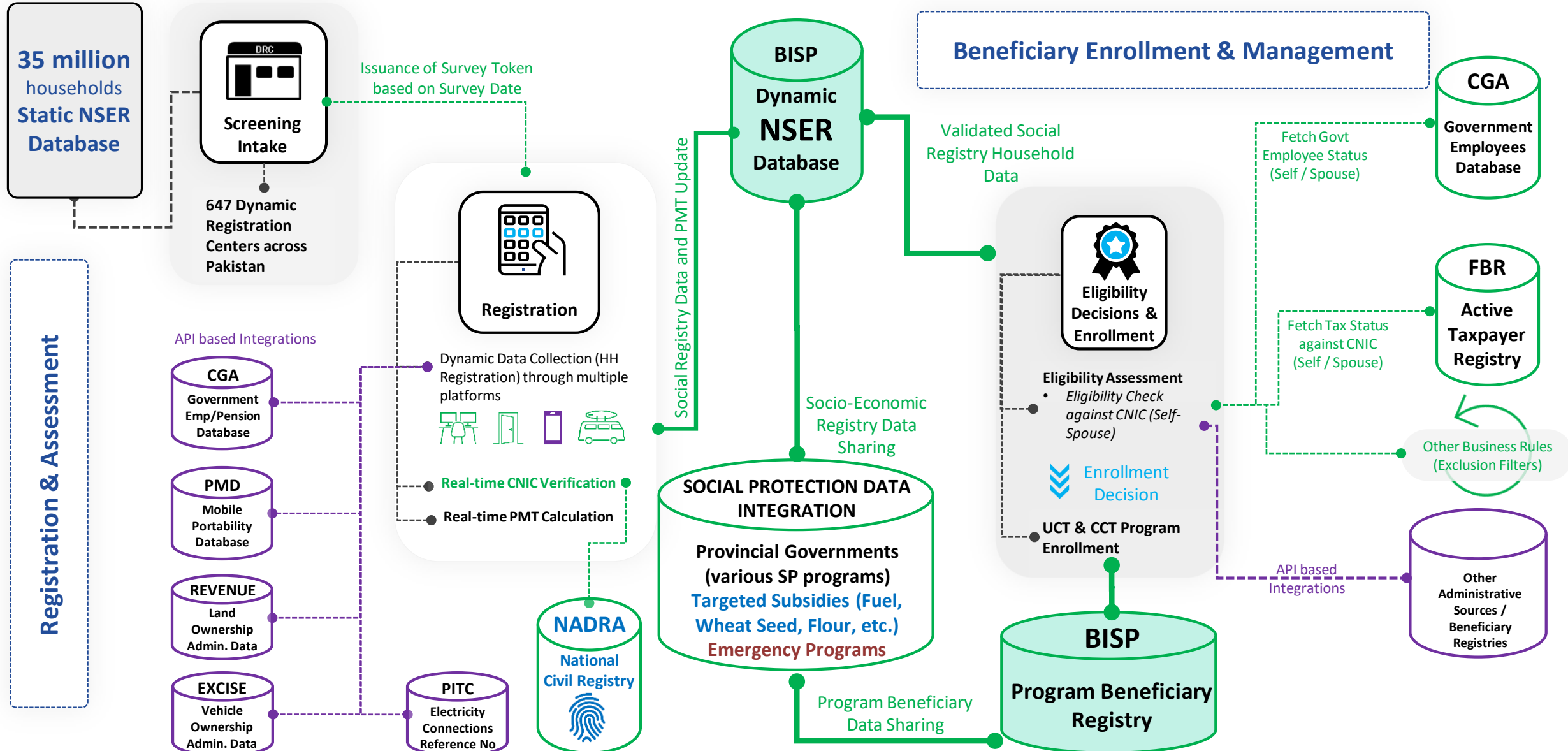
INNOVATION AND ADAPTIVE SOCIAL PROTECTION

SESSION

DIGITAL INFRASTRUCTURE FOR ADAPTIVE SOCIAL PROTECTION

Interoperability

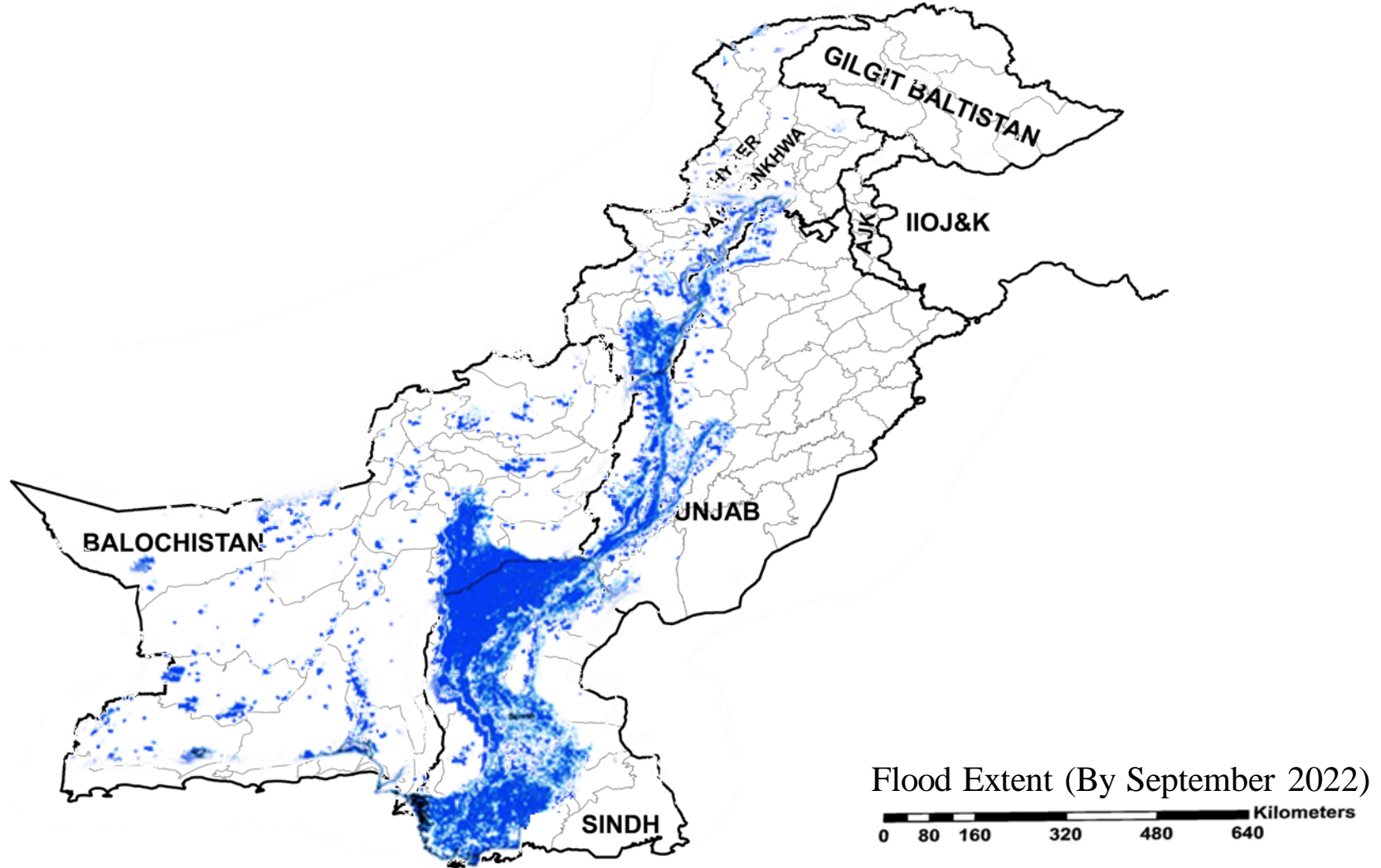
Institutional Arrangements & The Data and Information Systems



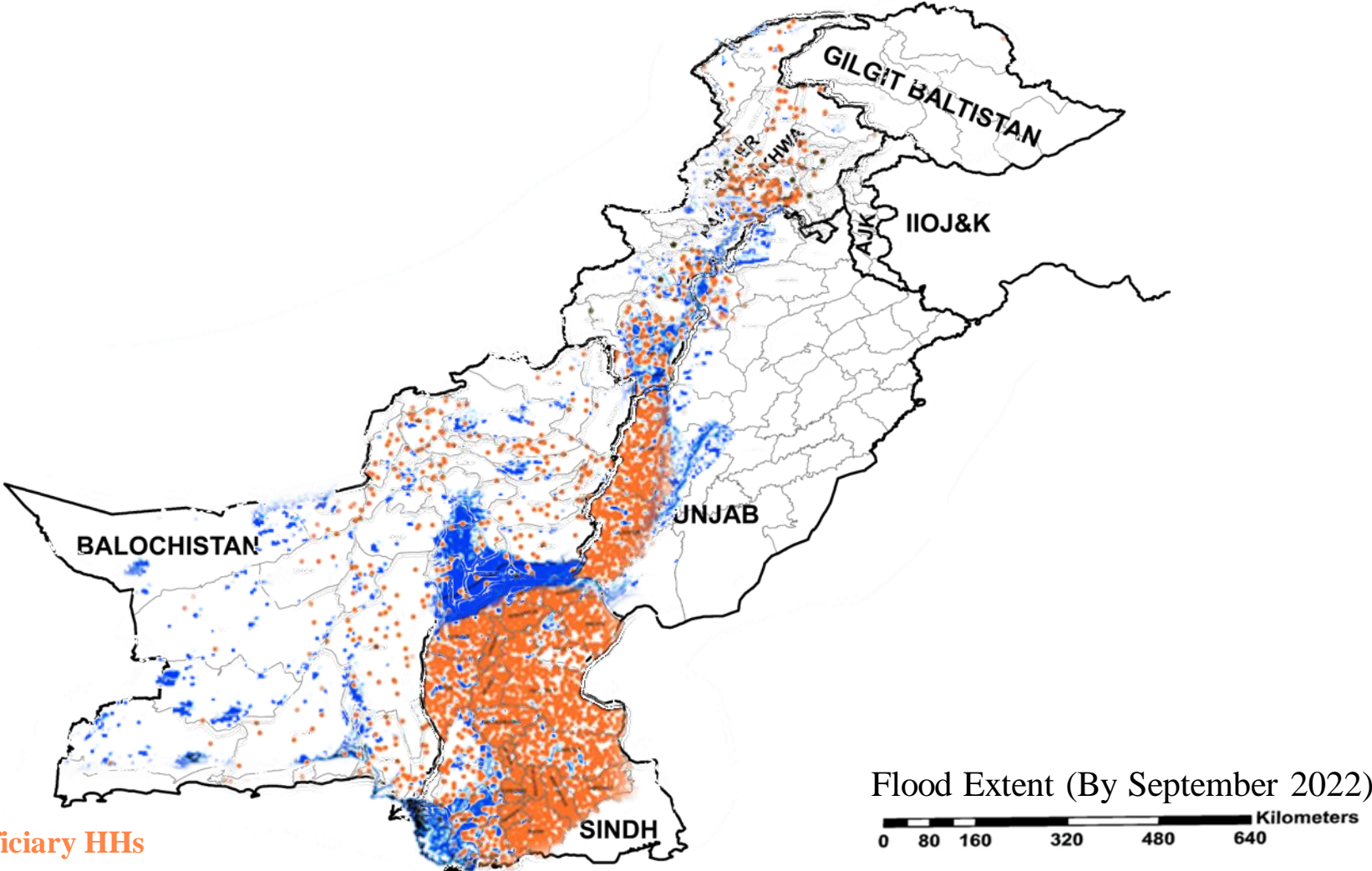


Thank you

Flood Impact 2022



BISP Response to Floods 2022



1 DOT= 500 Beneficiary HHs

